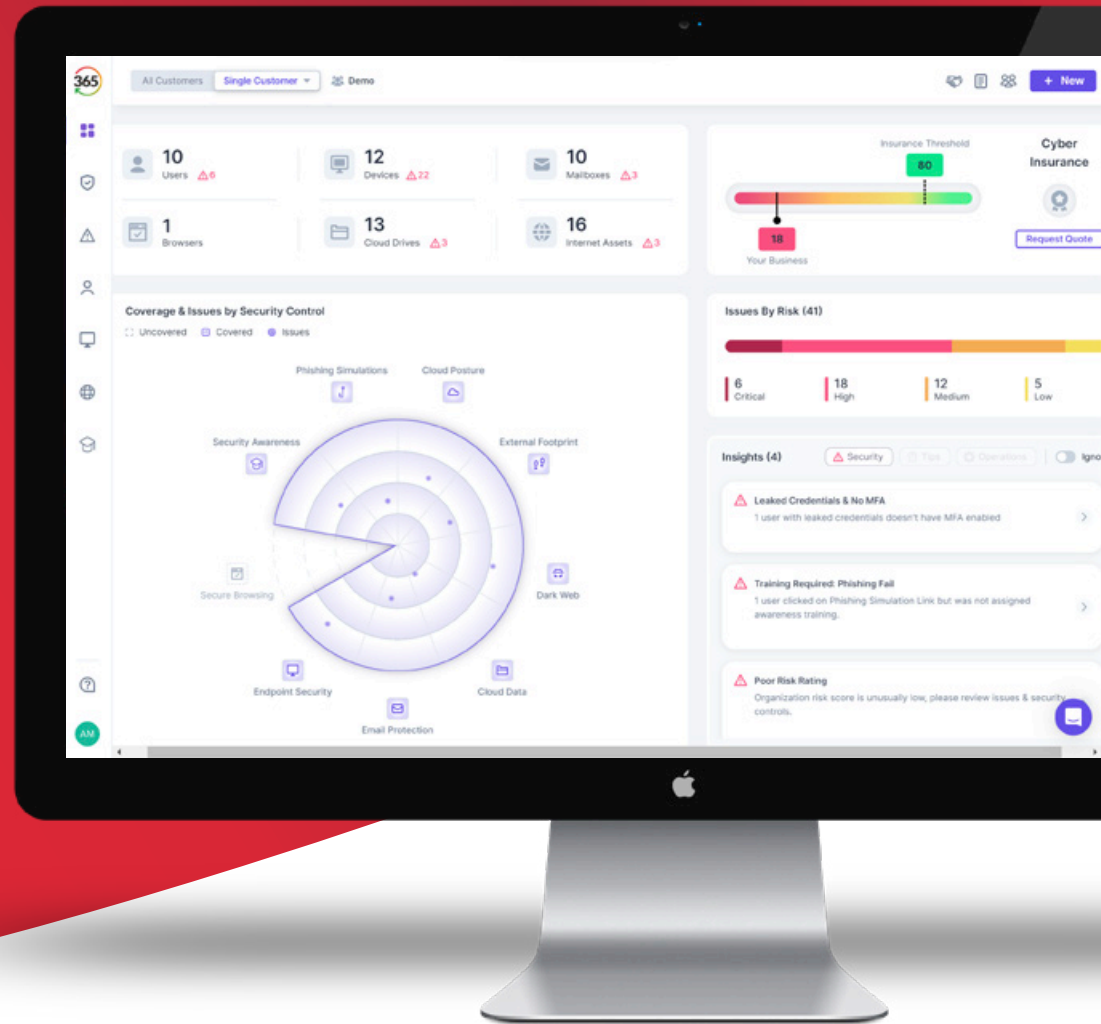




Keep Cyber Simple



FIND, FIX, SECURE and INSURE

trust365.com

# It all starts with your **Cyber Risk Score**

Our Cyber Risk Scoring system identifies, monitors and measures the key threats your business faces every day.

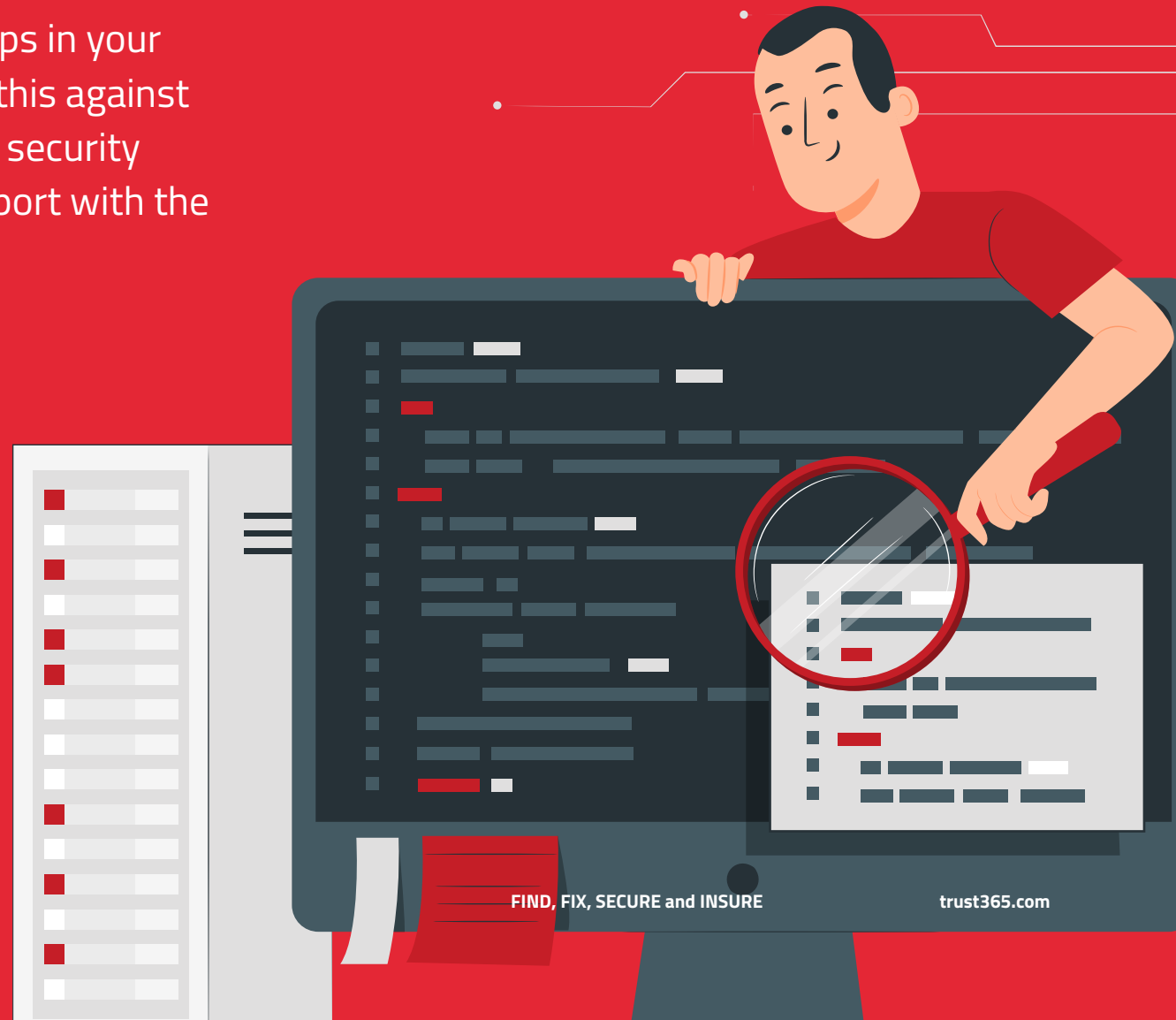
We also factor-in key areas like data loss, i.e., what data has already been leaked and what data has already been compromised.

# 56

# Find

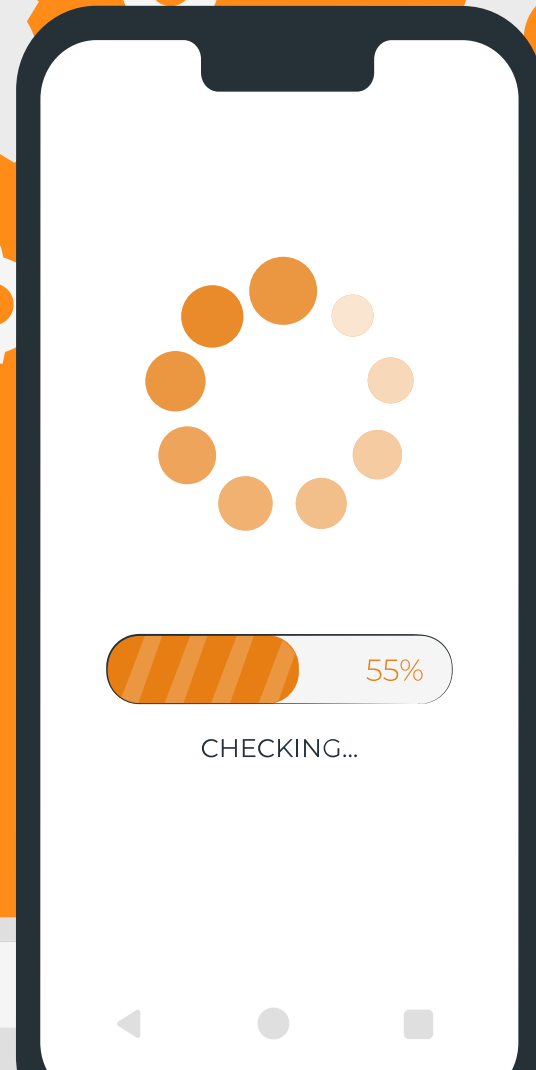
During this **FIND** phase we are looking at the situation you are in and identify the gaps in your armour. Once we have these, we map this against a sophisticated benchmark of multiple security controls and generate a Cyber Risk Report with the all-important Cyber Risk Score.

Trust365



# Fix

Once we have established your score, we can then work on generating a plan to **FIX** your security state across many of the threats that your business is exposed to every minute of every day.



trust365.com

# Secure

We then add layers of additional security services designed to protect your organisation's data assets from ransom or theft. This is the **SECURE** phase.

Our key focus is on the where organisations are normally most exposed and **SECURE** them fast. Exposure in these areas typically represents more than 65% of your overall risk:

- ✓ Email
- ✓ Sites
- ✓ Devices
- ✓ Users
- ✓ Apps
- ✓ Connections

We then work on the broader spectrum of cyber risk to fill any remaining gaps in your armour.



# Take the Cyber Risk Test



1. How many users and devices do we have in use?
2. **How many software packages or services are in use?**
3. Are we patched and secure?
4. **Do we scan and monitor our business for security issues?**
5. Do we have Malware/Ransomware defences in place?
6. **Is my Office 365 secure?**
7. Where do we use WiFi and is it secure?
8. **Do we back-up our data?**
9. Do we have the necessary in-house skills or training in place?
10. **Do we know if our Network is secure?**
11. Have we locked-down what needs to be locked-down?
12. **Do we have access to IT assets managed by privileged access?**
13. Do we have a firewall and DNS security?
14. **Do we monitor and log all IT events?**
15. Do we make sure that no-one can access our systems without permission?
16. **Do we have our Users' credentials centralised, managed, and monitored?**
17. Do we have the right data protection protocols and services in place?
18. **If we had a data breach, do we have an agreed processes in place to recover from it?**
19. If we have most of our security issues covered, do we have resources in place to continually improve our state?
20. **And if so, do we monitor and test our overall cybersecurity state on a regular basis?**

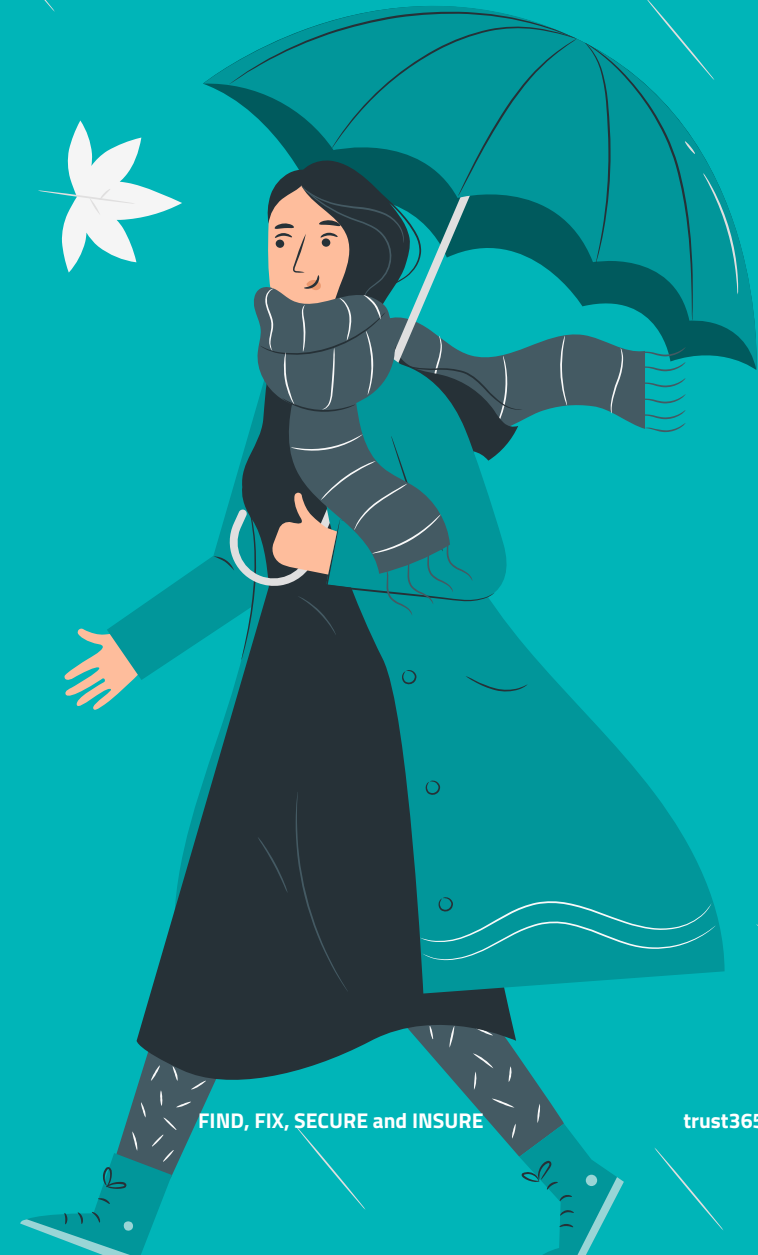


**datasurance**

# Insure

Your Cybersecurity Remediation Plan will include adding Datasurance and how to get our Cyber Risk Insurance cover in place. The **INSURE** phase.

You get on with business as usual and we always have your back, for total peace of mind.



 **datasurance** powered by **experian.**  
be sure you're secure

**SECURED AND INSURED**

Experian describes  
**Trusted Merchant Limited**  
as a very low risk company; no hesitation in recommending transactions.

Domain: **www.trustedmerchant.co.uk**  
LEI: **529900T8BM49AURSD055** Verification Date: 1st February 2024

BUSINESS CREDENTIALS BUSINESS ID DATA SECURITY DATASURANCE



**datasurance**

The evolution of trust

Hello John



Log out



### Threats

<b>Critical</b> Detected & removed <b>0</b>	<b>High</b> Detected & removed <b>0</b>	<b>Medium</b> Detected & removed <b>0</b>	<b>Low</b> Detected & removed <b>0</b>
------------------------------------------------	--------------------------------------------	----------------------------------------------	-------------------------------------------

### GDPR

<b>Getting started</b> Manage your GDPR compliance quickly, easily and in real time every day with your Datasurance GDPR tools.	<b>System &amp; Suppliers</b> Ensure GDPR compliance extends beyond your own organisation – check out suppliers and partners GDPR posture with Datasurance.	<b>Data Breach Log</b> Keep on top of any and all data breaches, with full audit trail and remedial actions mapped out in your Datasurance dashboard.	<b>Subject Access Request</b> Let Datasurance help you deal with any and every Subject Access Requests made of your organisation, no matter how many.
------------------------------------------------------------------------------------------------------------------------------------	----------------------------------------------------------------------------------------------------------------------------------------------------------------	----------------------------------------------------------------------------------------------------------------------------------------------------------	----------------------------------------------------------------------------------------------------------------------------------------------------------

### Cybersecurity Services

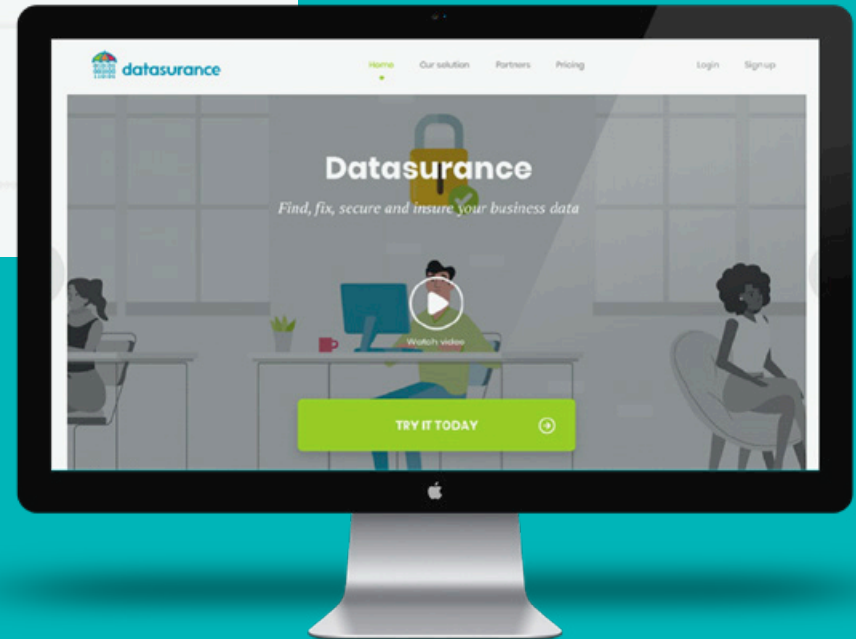
<b>Web Security</b> <b>24</b> Domains need configuration	<b>Devices</b> <b>78</b> Devices in your network
----------------------------------------------------------------	--------------------------------------------------------

[SETUP MY SERVICES](#)

[Legal stuff](#) | [Privacy Policy](#) | [Terms of Service](#)



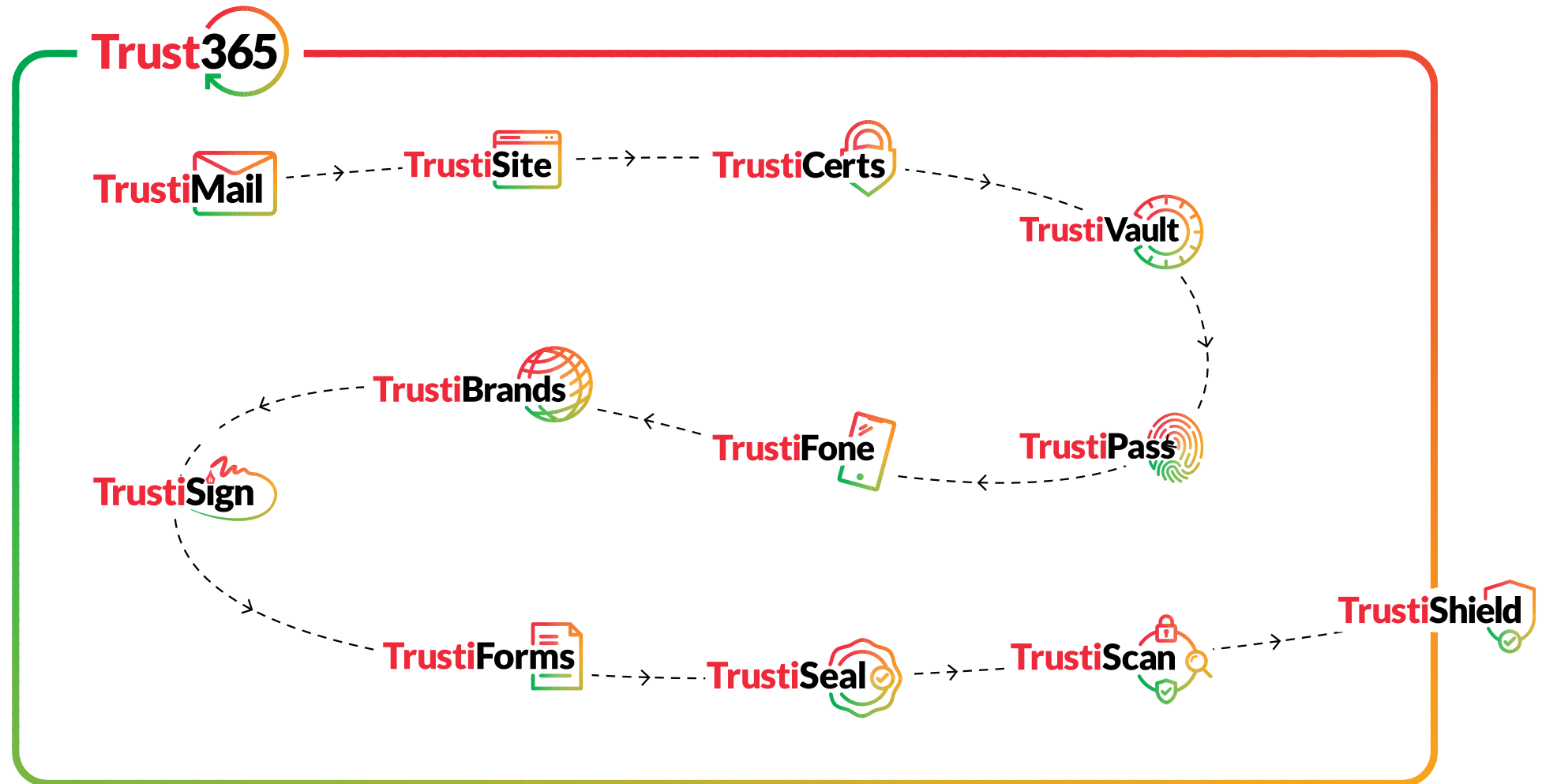
**datasurance**





# Trust365 Protection

We prioritise the customer journey based on mailing the main risks and finish-off with 24/7 monitoring.

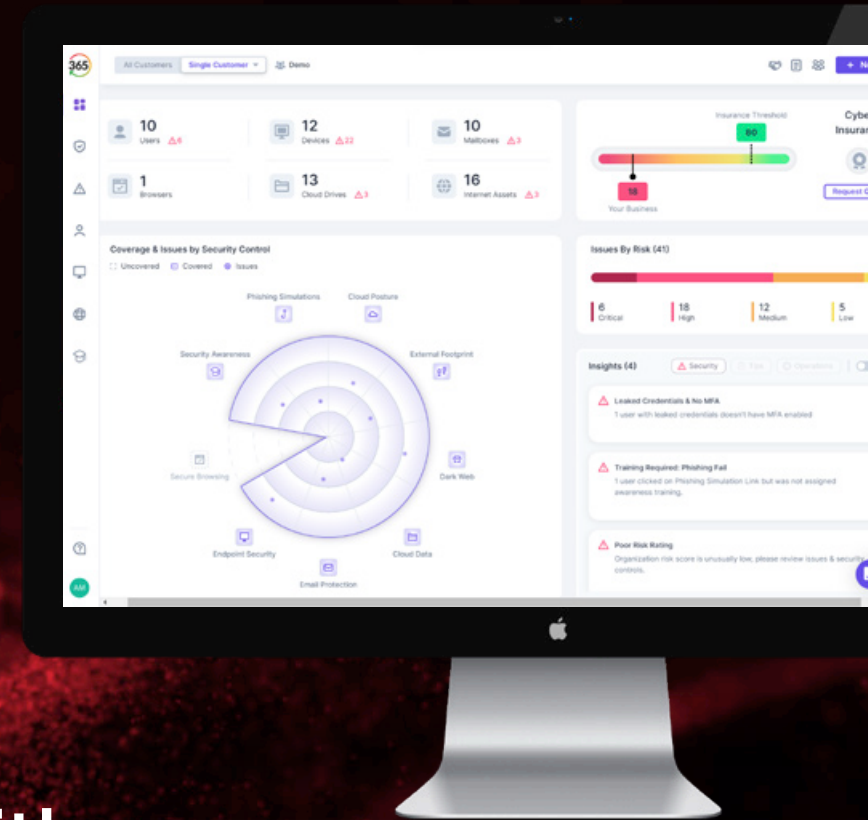


# Keep Cyber Simple

FIND, FIX, SECURE and INSURE with



**datasurance**

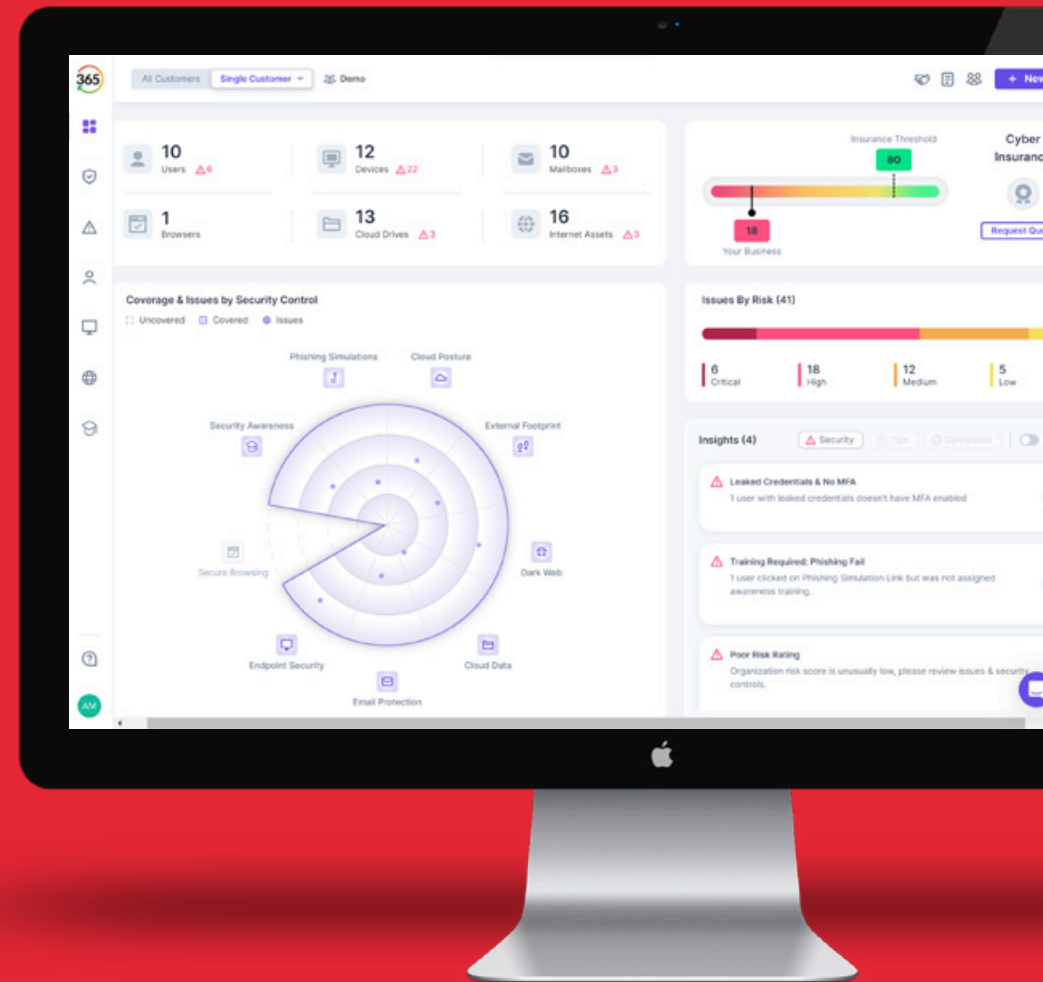




# What the customer gets

A compelling DASHBOARD, which tells the user every day what has been found, fixed, and secured. It also offers a GDPR tracker and Risk management toolset, as well as connections to Cyber Awareness Training and other partner resources. Trust365 is a whole-market managed security service with optional Cyber Risk Insurance. Each of the Trust365 services can be purchased individually or as part of the managed security service.

The cost of your Cyber Risk Insurance is included up to 250 seats and is linked to company size for organisations larger than 250 seats.



# Trust365 Pricing

Number Of Users (single customer)	Pay Annual TFY SRP \$ Price per User (1-year)	Pay monthly TFY SRP \$ Price per User (1-year)
1-99 Users	\$96.00	\$8.00
100-499 Users	\$72.00	\$6.40
500-999 Users	\$60.00	\$5.80
1000-1499 Users	\$54.00	\$5.40
1500-2499 Users	\$48.00	\$5.00
2500-4999 Users	\$42.00	\$4.80
5000+ Users	\$36.00	\$4.40

Prices in USD\$, excl VAT

# TrustiMail Pricing

T365 App	Service Description	Availability	Trust365 Pricing
TrustiMail	Zero phishing email	Available immediately	<b>\$8/user/month</b> ( <i>Phishing-free Secure Email</i> )
TrustiCerts	Certificate management services	Available once TrustiMail is fully QA tested	<b>\$70/site/annum</b> ( <i>free cert with TrustiSite++</i> )
TrustiSite	8 layers of website protection	Available once TrustiMail is fully QA tested	<b>\$299/site/annum</b> ( <i>8 security services including WAF, CDN and DNSSEC</i> )
TrustiScan	Continuous scanning and pen testing	Available once TrustiMail is fully QA tested	<b>\$250/organisation/month for 30 up to end points</b> ( <i>continuous scanning</i> )
TrustiSign	Advanced digital signatures	Available once TrustiMail is fully QA tested	<b>\$0.40/signature</b> ( <i>Advanced Digital Signatures</i> )
TrustiFone	Secure Video, SRTP, Mobile, Messaging & File Sharing	Available once TrustiMail is fully QA tested	<b>\$30/user/month</b> ( <i>Secure voice, video, messaging on all devices</i> )
TrustiPass	MFA, SSO, Secure WiFi/Remote working, VPN	Available once TrustiMail is fully QA tested	<b>\$5/user/month</b> ( <i>SSO/MFA for all apps</i> )
TrustiVault	Secure Back-up, DR, Breach Recovery & Anti-Ransomware	Available once TrustiMail is fully QA tested	<b>\$275/TB/month</b> ( <i>back-up, scan and secure all data</i> )
TrustiBrands	Brand protection services and DLP	Available for special orders	<b>\$7,500 per organisation per annum</b> ( <i>all domains</i> )
TrustiShield	Anti-virus, Endpoint Managed Detection Protection & Response XDR	Available for special orders	<b>\$109 per endpoint/month</b> ( <i>XDR for all orgs</i> )
TrustiCode	Code scanning, fix & signing	Available for special orders	<b>\$5,000/organisation/annum</b> ( <i>sign and secure all s/w code</i> )
TrustiSeal	Supply chain trust	Available for special orders	<b>\$500/organisation/domain annum</b> ( <i>supply chain trust and Cyber Risk Score</i> )



**Trustify Ltd**

5 South Charlotte Street,  
Edinburgh,  
EH2 4AN UK

**UK: +44 800 634 3365**

**US: +1 866 583 3365**